

COMPOSITE INDUSTRIAL PRESSURE VESSELS WITH FLANGED OPENINGS

6" TOP ONLY

6" TOP - 6" BOTTOM STANDARD

6" TOP - 6" BOTTOM with M20 DOME OPENING

6" TOP - 6" BOTTOM, 2 SIDE CONNECTIONS DN 50 (63mm piping)

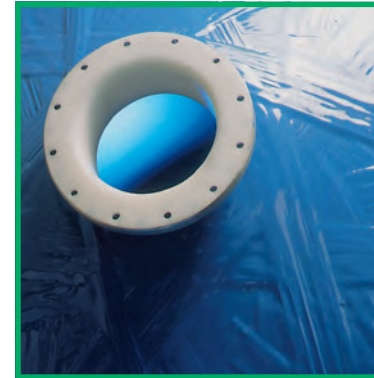
6" TOP - 6" BOTTOM, 2 SIDE CONNECTIONS DN 80 (90mm piping)

DN200 TOP - DN200 BOTTOM

DN 400 TOP - 6" BOTTOM, 2 SIDE CONNECTIONS DN 80(90mm piping)

DN400 TOP - 6" BOTTOM, DN100 SIDE CONNECTION

DN400 TOP - 6" BOTTOM, DN150 SIDE CONNECTION

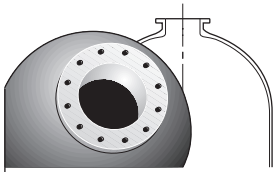


NEW

79" - 2 meter diameter, DN 400 Top - 6" BOTTOM, diameter 125mm connection.

STRUCTURAL

TECHNICAL DATA & DRAWINGS



COMPOSITE INDUSTRIAL PRESSURE VESSELS WITH FLANGED OPENINGS

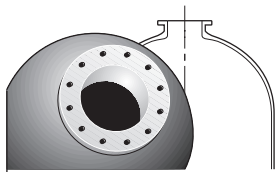
STRUCTURAL

TECHNICAL DATA



This pressure vessel is intended for use in water treatment installations.
Not suitable for pneumatic applications.

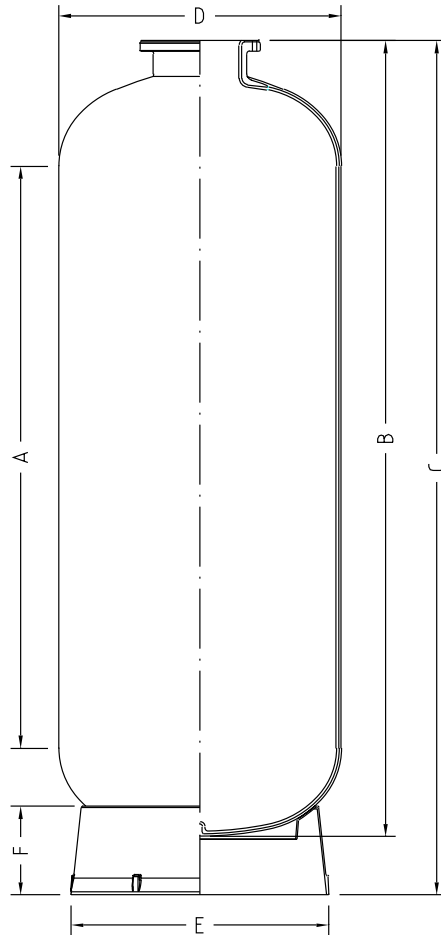
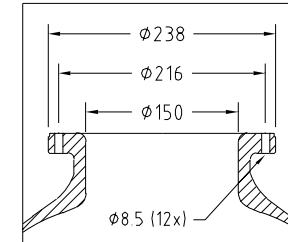
FLANGE OPENING:	6" (150 mm) - DN200 - DN400
OPERATING PRESSURE:	MIN 0 BAR - MAX 10 BAR
OPERATING TEMPERATURE:	MIN 1°C - MAX 65°C
MINIMUM FATIGUE TESTING:	250.000 CYCLES BETWEEN 0 - 10 BAR
STANDARD COLOUR:	DURALAM BLUE VESSEL, RAL 5015, BLACK BASE
OTHER POSSIBLE COLOURS:	RAL-COLOUR STANDARDS
DISTRIBUTION SYSTEMS:	SEE DISTRIBUTION SYSTEMS CATALOGUE



COMPOSITE INDUSTRIAL PRESSURE VESSELS WITH FLANGED OPENINGS

6" TOP ONLY

DETAIL 6" FLANGE



CD-TP-I-220A

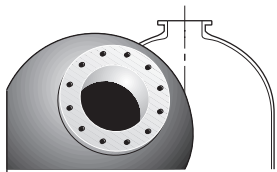
TYPE	D (mm)	(l)	(l)	A (mm)	B (mm)	C (mm)	E (mm)	F (mm)	(kg)	(kg)
C-1445-A3	Ø369	98	7,3	838	1142	1389-1409	Ø330	80	320	16,0
C-1468-A3	Ø369	138	7,3	1355	1659	1693-1713	Ø330	80	320	22,0
C-1668-A3	Ø406	170	10,1	1336	1673	1704-1724	Ø330	80	410	24,6
C-1868-A3	Ø469	248	14,6	1344	1717	1762-1792	Ø510	170	685	34,0
C-2166-A3	Ø552	308	24,0	1159	1562	1663-1683	Ø510	170	685	34,6
C-2475-A3	Ø610	450	35,0	1320	1793	1898-1918	Ø510	170	985	42,0
C-3078-A3	Ø770	710	67,0	1282	1843	2043-2073	Ø768	334	1590	81,2
C-3678-A3	Ø927	1020	116,0	1235	1885	2119-2149	Ø768	334	2240	104,0
C-4278-A3	Ø1074	1360	176,0	1200	1200	1998-2038	Ø1095	278	2990	168,5
C-4882-A3	Ø1226	1840	273,0	1075	1075	2103-2133	Ø1100	276	4040	194,0

All with base and single packaging

OPERATING PRESSURE : MIN 0 BAR - MAX 10 BAR

OPERATING TEMPERATURE : MIN 1°C - MAX 65°C

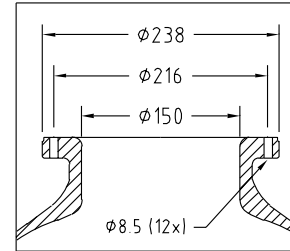
Aeration valve included as from 30"



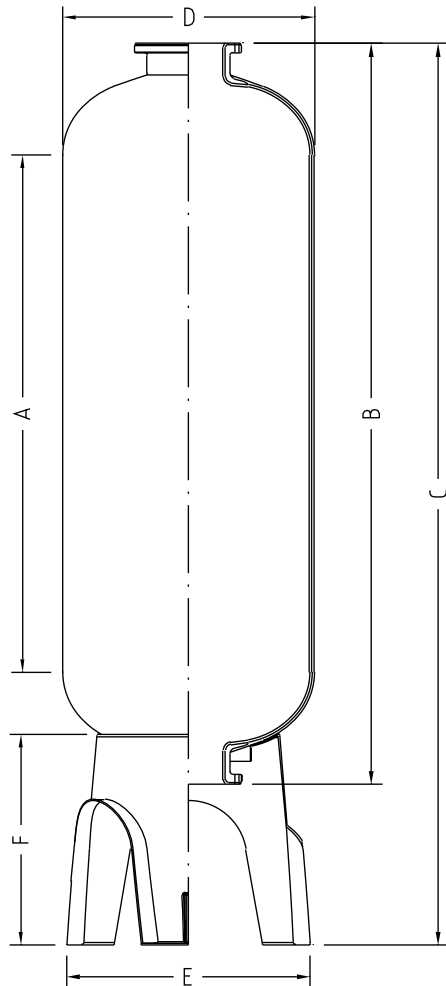
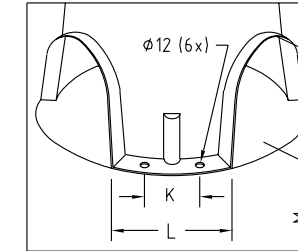
COMPOSITE INDUSTRIAL PRESSURE VESSELS WITH FLANGED OPENINGS

6" TOP - 6" BOTTOM STANDARD

DETAIL 6" FLANGE



DETAIL BASE



All with base and single packaging

CD-TP-I-219C

External diameter
Volume vessel
Volume dome
Cylindrical height
Height vessel
Total height
min - max
Outside diameter base
Height base
Maximum base load
Bolt distance base
Width base leg
Free height base
Weight empty vessel

TYPE	D (mm)	(l)	(l)	A (mm)	B (mm)	C (mm)	E (mm)	F (mm)	(kg)	K (mm)	L (mm)	M (mm)	(kg)
C-1468-F7	Ø369	140	7,3	1369	1736	2064-2084	Ø488	468	405	110	184	307	27
C-1668-F7	Ø406	172	10,1	1356	1748	2088-2108	Ø488	468	405	110	184	307	30
C-1868-F7	Ø469	250	14,6	1344	1780	2105-2135	Ø545	466	710	110	245	304	36
C-2166-F7	Ø552	310	24,0	1158	1642	2000-2020	Ø545	466	710	110	245	304	43
C-2475-F7	Ø610	450	35,0	1320	1866	2210-2230	Ø620	480	995	110	223	311	47
C-3078-F7	Ø770	710	67,0	1284	1920	2270-2300	Ø778	518	1590	110	240	330	85
C-3678-F7	Ø927	1020	116,0	1272	1975	2310-2350	Ø955	556	2245	110	265	380	101
C-4278-F7	Ø1074	1360	176,0	1200	2015	2390-2430	Ø1110	595	2990	108	278	412	133
C-4882-F7	Ø1226	1840	273,0	1075	2055	2420-2465	Ø1270	605	4040	150	316	414	178
C-55104-F7	Ø1429	2619	466,0	1106	2122	2641-2681	Ø1370	727	11000	300	663	476	284
C-55120-F7	Ø1429	3220	466,0	1500	2516	3041-3081	Ø1370	727	11000	300	663	476	348
C-55130-F7	Ø1429	3602	466,0	1750	2766	3291-3331	Ø1370	727	11000	300	663	476	375
C-55140-F7	Ø1429	3984	466,0	2000	3016	3541-3581	Ø1370	727	11000	300	663	476	401
C-63103-F7	Ø1623	4265	638,0	1500	2623	3230-3270	Ø1570	845	13600	350	790	557	364
C-63113-F7	Ø1623	4760	638,0	1750	2873	3480-3520	Ø1570	845	13600	350	790	557	394
C-63123-F7	Ø1623	5255	638,0	2000	3123	3730-3770	Ø1570	845	13600	350	790	557	423

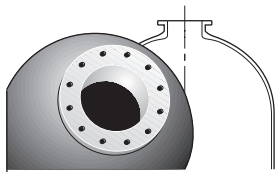
OPERATING PRESSURE : MIN 0 BAR - MAX 10 BAR

OPERATING TEMPERATURE : MIN 1°C - MAX 65°C

Aeration valve included as from 30"

CD_CIF4_0900

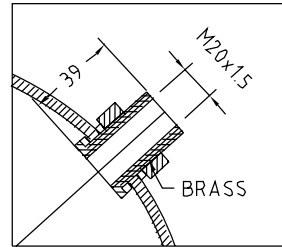
STRUCTURAL



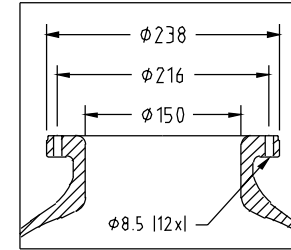
COMPOSITE INDUSTRIAL PRESSURE VESSELS WITH FLANGED OPENINGS

6" TOP - 6" BOTTOM with M20 DOME OPENING

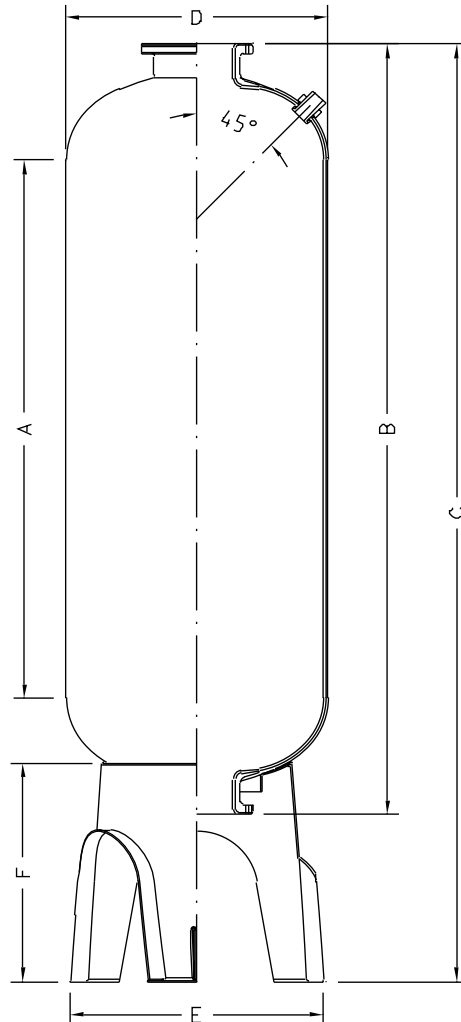
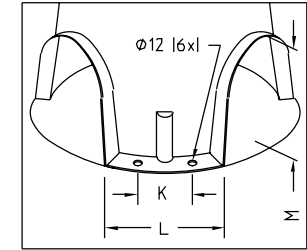
DETAIL DOME FITTING



DETAIL 6" FLANGE



DETAIL BASE



CD-TP-I-286A

External diameter
Volume vessel
Volume dome
Cylindrical height
Height vessel
Total height min - max
Outside diameter base
Height base
Weight empty vessel
Maximum base load
Bolt distance base
Width base leg
Free height base

TYPE	D (mm)	(l)	(l)	A (mm)	B (mm)	C (mm)	E (mm)	F (mm)	(kg)	(kg)	K (mm)	L (mm)	M (mm)
C-3078-D201	Ø770	710	67	1284	1920	2270-2300	Ø778	518	85	1590	110	240	330
C-3678-D201	Ø927	1020	116	1272	1975	2310-2350	Ø955	556	101	2245	110	265	380
C-4278-D201*	Ø1074	1360	176	1200	2015	2390-2430	Ø1110	595	133	2990	108	278	412
C-4882-D201*	Ø1226	1840	273	1075	2055	2420-2465	Ø1270	605	178	4040	150	316	414

* Not available yet

All with base and single packaging

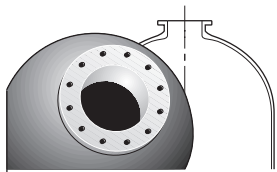
OPERATING PRESSURE : MIN 0 BAR - MAX 10 BAR

OPERATING TEMPERATURE : MIN 1°C - MAX 65°C

Aeration valve included as from 30"

CD_CIF5_0900

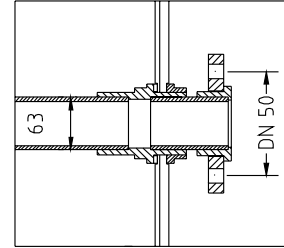
STRUCTURAL



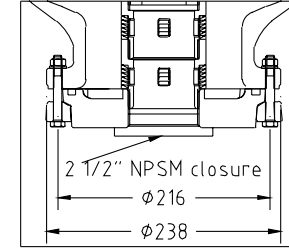
COMPOSITE INDUSTRIAL PRESSURE VESSELS WITH FLANGED OPENINGS

6" TOP - 6" BOTTOM, 2 SIDE CONNECTIONS DN 50 (63mm piping)

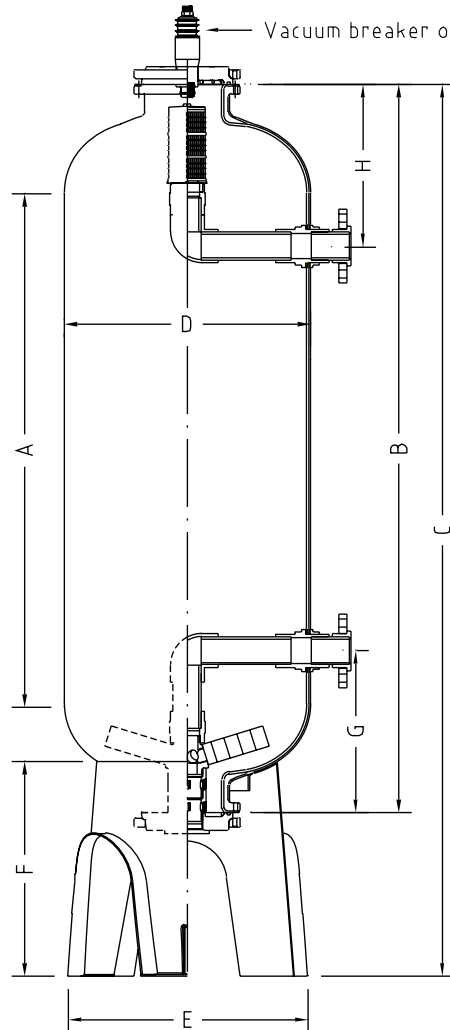
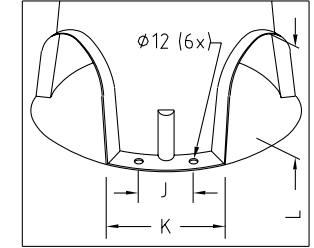
DETAIL SIDE HOLE



DETAIL 6" FLANGE



DETAIL BASE



CD-TP-I-271B

TYPE	External diameter D (mm)	Volume vessel (l)	Volume dome (l)	Cylindrical height A (mm)	Height vessel B (mm)	Total height min - max C (mm)	Outside diameter base E (mm)	Height base F (mm)	Distance lower sidehole G (mm)	Distance upper sidehole H (mm)	Bolt distance base J (mm)	Width base leg K (mm)	Free height base L (mm)	Weight empty vessel /(kg)	Maximum base load /(kg)
C-2166-S611	Ø552	310	24.0	1158	1642	2000-2020	Ø545	466	377	380	110	245	304	43	710
C-2475-S611	Ø610	450	35.0	1320	1866	2210-2230	Ø620	480	416	418	110	223	311	47	995
C-3078-S611	Ø770	710	67.0	1284	1920	2270-2300	Ø778	518	458	459	110	240	330	85	1590
C-3678-S611	Ø927	1020	116.0	1272	1975	2310-2350	Ø955	556	545	546	110	265	380	101	2245

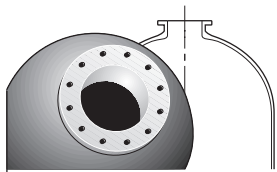
All with base and single packaging

OPERATING PRESSURE : MIN 0 BAR - MAX 10 BAR

OPERATING TEMPERATURE : MIN 1°C - MAX 65°C

Aeration valve included as from 30"

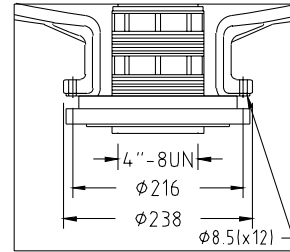
CD_CIF6_0900



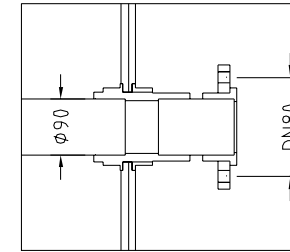
COMPOSITE INDUSTRIAL PRESSURE VESSELS WITH FLANGED OPENINGS

6" TOP - 6" BOTTOM, 2 SIDE CONNECTIONS DN 80 (90mm piping)

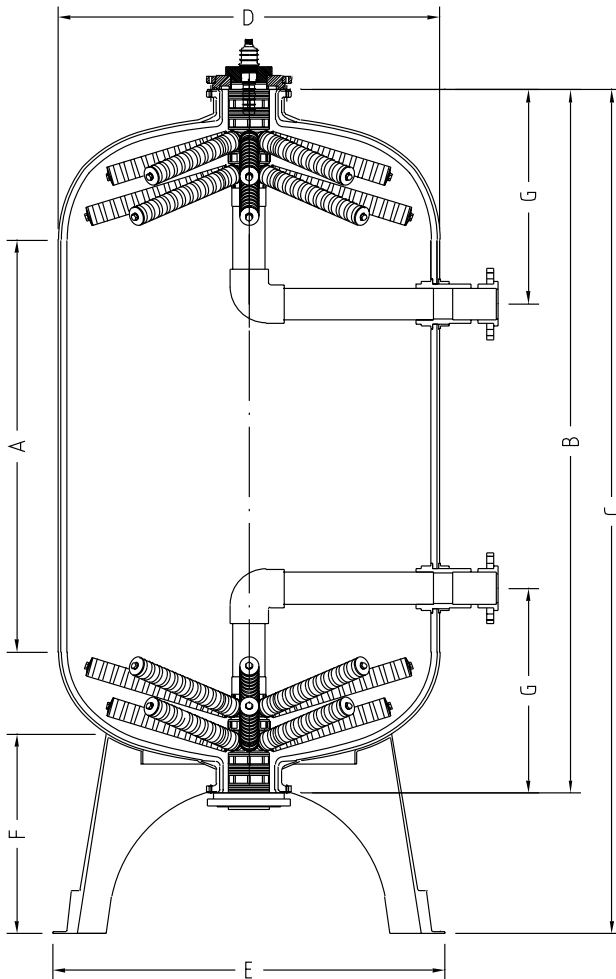
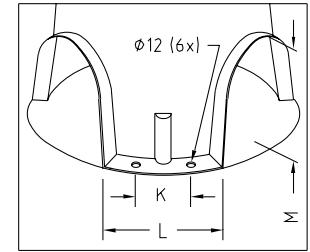
DETAIL 6" TOP/BTMFLANGE



DETAIL DN80



DETAIL BASE



CD-TP-I-282A

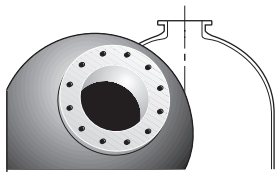
TYPE	D (mm)	(I)	(II)	A (mm)	B (mm)	C (mm)	E (mm)	F (mm)	G (mm)	K (mm)	L (mm)	M (mm)	/(kg)	/(kg)
C-4278-S911	Ø1074	1360	176	1200	2015	2390-2430	Ø1110	595	577	108	278	412	133	2990
C-4882-S911	Ø1226	1840	273	1075	2055	2420-2465	Ø1270	605	634	150	316	414	178	4040
C-55104-S911	Ø1429	2619	466	1106	2122	2641-2681	Ø1370	727	698	300	663	476	284	11000
C-55120-S911	Ø1429	3220	466	1500	2516	3041-3081	Ø1370	727	698	300	663	476	348	11000
C-55130-S911	Ø1429	3602	466	1750	2766	3291-3331	Ø1370	727	698	300	663	476	375	11000
C-55140-S911	Ø1429	3984	466	2000	3016	3541-3581	Ø1370	727	698	300	663	476	401	11000
C-63103-S911	Ø1623	4265	638	1500	2623	3230-3270	Ø1570	845	741	350	790	557	364	13600
C-63113-S911	Ø1623	4760	638	1750	2873	3480-3520	Ø1570	845	741	350	790	557	394	13600
C-63123-S911	Ø1623	5255	638	2000	3123	3720-3770	Ø1570	845	741	350	790	557	423	13600

All with base and single packaging

OPERATING PRESSURE : MIN 0 BAR - MAX 10 BAR

OPERATING TEMPERATURE : MIN 1°C - MAX 65°C

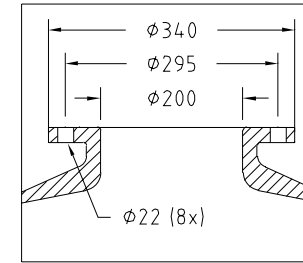
Aeration valve included



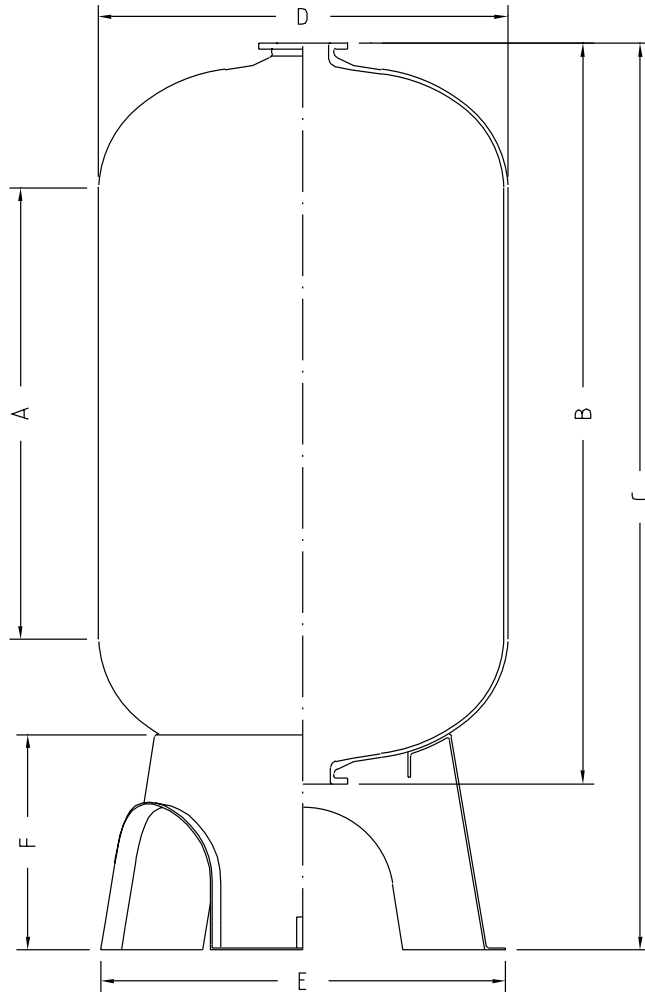
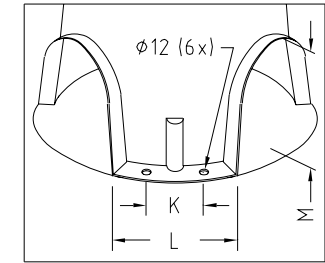
COMPOSITE INDUSTRIAL PRESSURE VESSELS WITH FLANGED OPENINGS

DN200 TOP - DN200 BOTTOM

DETAIL DN200 FLANGE



DETAIL BASE



CD-TP-I-233B

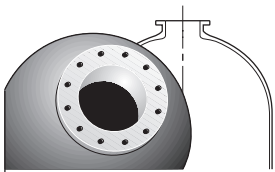
TYPE	External diameter D (mm)	Volume vessel (l)	Volume dome (l)	Cylindrical height A (mm)	Height vessel B (mm)	Total height min - max C (mm)	Outside diameter base E (mm)	Height base F (mm)	Maximum base load (kg)	Bolt distance base K (mm)	Width base leg L (mm)	Free height base M (mm)	Weight empty vessel (kg)
C-55105-F7	Ø1429	2617	465	1106	2118	2648-2680	Ø1370	727	11000	300	663	476	286
C-55121-F7	Ø1429	3219	465	1500	2512	3048-3088	Ø1370	727	11000	300	663	476	335
C-55131-F7	Ø1429	3600	465	1750	2762	3298-3338	Ø1370	727	11000	300	663	476	361
C-55141-F7	Ø1429	3902	465	2000	3012	3548-3588	Ø1370	727	11000	300	663	476	387
C-63102-F7	Ø1623	4270	640	1500	2618	3225-3265	Ø1570	845	13600	350	790	557	368
C-63112-F7	Ø1623	4765	640	1750	2868	3475-3515	Ø1570	845	13600	350	790	557	397
C-63122-F7	Ø1623	5620	640	2000	3118	3725-3765	Ø1570	845	13600	350	790	557	427

All with base and single packaging

OPERATING PRESSURE : MIN 0 BAR - MAX 10 BAR

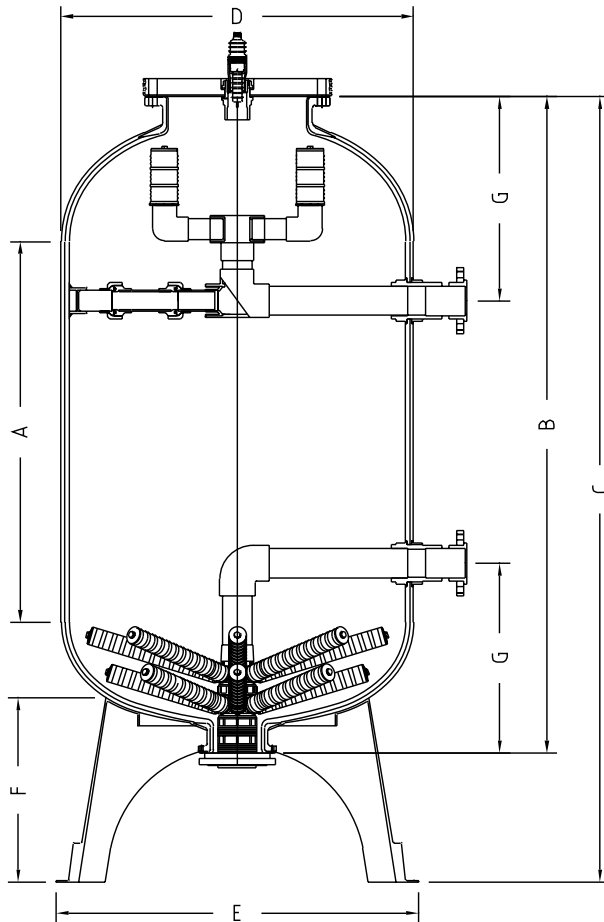
OPERATING TEMPERATURE : MIN 1°C - MAX 65°C

Aeration valve included



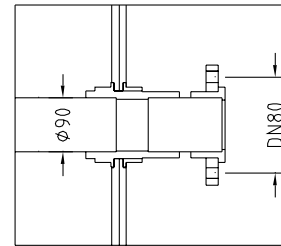
COMPOSITE INDUSTRIAL PRESSURE VESSELS WITH FLANGED OPENINGS

DN 400 TOP - 6" BOTTOM, 2 SIDE CONNECTION DN 80 (90mm piping)

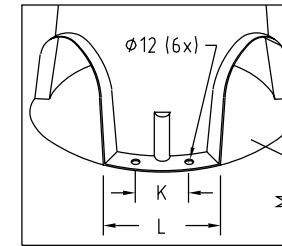


CD-TP-I-281A

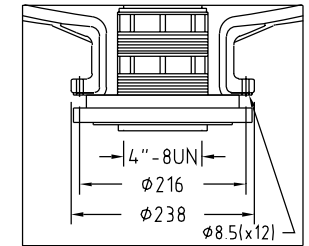
DETAIL DN80



DETAIL BASE



DETAIL 6" BOTTOM FLANGE



External diameter
Volume vessel
Volume dome
Cylindrical height
Height vessel
Total height min - max
Outside diameter base
Height base
Sidehole distance
Bolt distance base
Width base leg
Free height base
Weight empty vessel
Maximum base load

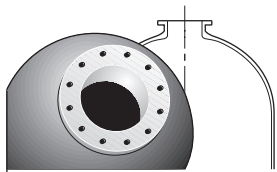
TYPE	D (mm)	(l)	(l)	A (mm)	B (mm)	C (mm)	E (mm)	F (mm)	G (mm)	K (mm)	L (mm)	M (mm)	/(kg)	/(kg)
C-4281-S911	Ø1071	1381	176	1169	2000	2375-2415	Ø1110	595	626	108	278	412	206	2990
C-4883-S911	Ø1220	1851	273	1135	2044	2411-2456	Ø1270	605	668	150	316	414	217	4040
C-55106-S911	Ø1429	2653	466	1106	2160	2679-2719	Ø1370	727	740	300	663	476	321	11000
C-55122-S911	Ø1429	3255	466	1500	2554	3073-3113	Ø1370	727	740	300	663	476	370	11000
C-55132-S911	Ø1429	3636	466	1750	2804	3323-3363	Ø1370	727	740	300	663	476	397	11000
C-55142-S911	Ø1429	4018	466	2000	3054	3573-3613	Ø1370	727	740	300	663	476	423	11000
C-63106-S911	Ø1623	4238	596	1500	2684	3291-3331	Ø1570	845	805	350	790	557	446	13600
C-63116-S911	Ø1623	4731	596	1750	2934	3541-3581	Ø1570	845	805	350	790	557	783	13600
C-63126-S911	Ø1623	5223	596	2000	3184	3791-3831	Ø1570	845	805	350	790	557	515	13600

All with base and single packaging

OPERATING PRESSURE : MIN 0 BAR - MAX 10 BAR

OPERATING TEMPERATURE : MIN 1°C - MAX 65°C

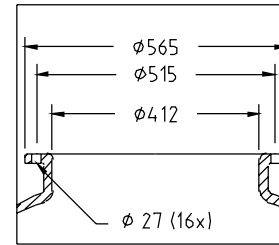
Aeration valve included



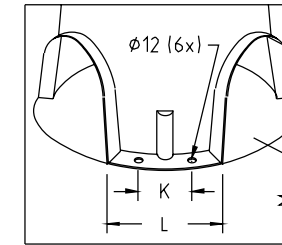
COMPOSITE INDUSTRIAL PRESSURE VESSELS WITH FLANGED OPENINGS

DN400 TOP - 6" BOTTOM, DN100 SIDE CONNECTION

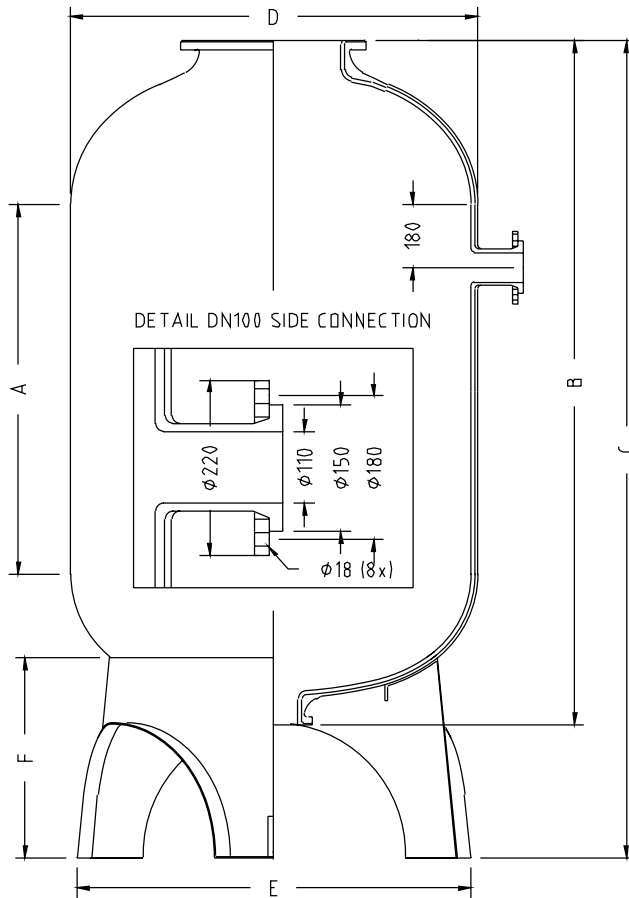
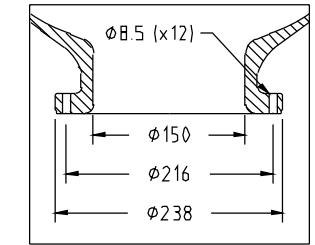
DETAIL DN400 TOP FLANGE



DETAIL BASE



DETAIL 6" BOTTOM FLANGE



CD-TP-I-253B



External diameter
Volume vessel
Volume dome
Cylindrical height
Height vessel
Total height min - max
Outside diameter base
Height base
Bolt distance base
Width base leg
Free height base
Weight empty vessel
Maximum base load

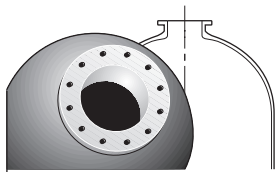
TYPE	D (mm)	(l)	(l)	A (mm)	B (mm)	C (mm)	E (mm)	F (mm)	K (mm)	L (mm)	M (mm)	/(kg)	/(kg)
C-4281-S100	Ø1071	1381	176	1169	2000	2375-2415	Ø1110	595	108	278	412	199	2990
C-4883-S100	Ø1220	1851	273	1135	2044	2411-2456	Ø1270	605	150	316	414	210	4040
C-55106-S100	Ø1429	2653	466	1106	2160	2679-2719	Ø1370	727	300	663	476	314	11000
C-55122-S100	Ø1429	3255	466	1500	2554	3073-3113	Ø1370	727	300	663	476	363	11000
C-55132-S100	Ø1429	3636	466	1750	2804	3323-3363	Ø1370	727	300	663	476	390	11000
C-55142-S100	Ø1429	4018	466	2000	3054	3573-3613	Ø1370	727	300	663	476	416	11000
C-63105-S100	Ø1623	4238	596	1500	2684	3291-3331	Ø1570	845	350	790	557	439	13600
C-63115-S100	Ø1623	4731	596	1750	2934	3541-3581	Ø1570	845	350	790	557	476	13600
C-63125-S100	Ø1623	5223	596	2000	3184	3791-3831	Ø1570	845	350	790	557	508	13600

All with base and single packaging

OPERATING PRESSURE : MIN 0 BAR - MAX 10 BAR

OPERATING TEMPERATURE : MIN 1°C - MAX 65°C

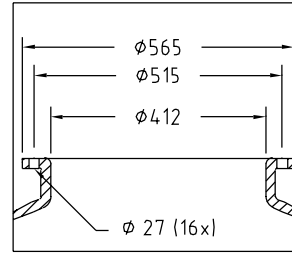
Aeration valve included



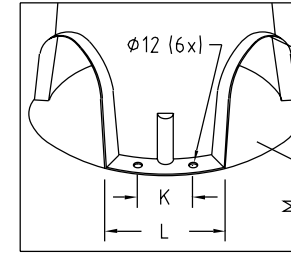
COMPOSITE INDUSTRIAL PRESSURE VESSELS WITH FLANGED OPENINGS

DN400 TOP - 6" BOTTOM, DN150 SIDE CONNECTION

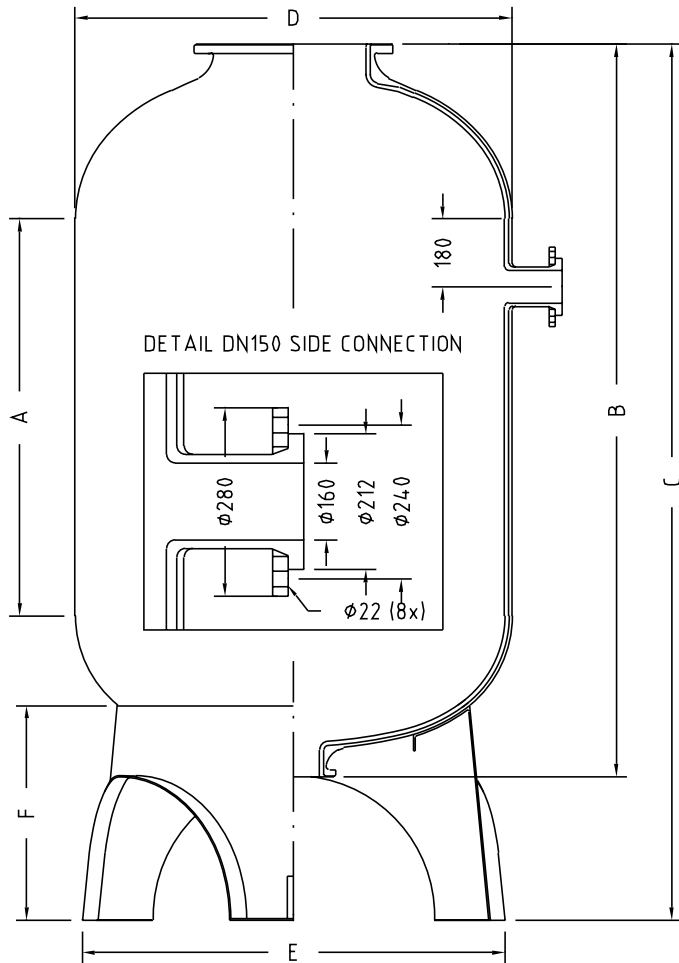
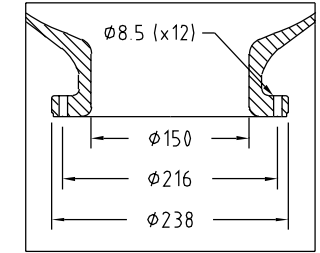
DETAIL DN400 TOP FLANGE



DETAIL BASE



DETAIL 6" BOTTOM FLANGE



CD-TP-I-254A

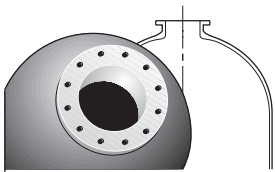
TYPE	D (mm)	(l)	(l)	A (mm)	B (mm)	C (mm)	E (mm)	F (mm)	K (mm)	L (mm)	M (mm)	/(kg)	/(kg)
C-4281-S150	Ø1071	1381	176	1169	2000	2375-2415	Ø1110	595	108	278	412	206	2990
C-4883-S150	Ø1220	1851	273	1135	2044	2411-2456	Ø1270	605	150	316	414	217	4040
C-55106-S150	Ø1429	2653	466	1106	2160	2679-2719	Ø1370	727	300	663	476	321	11000
C-55122-S150	Ø1429	3255	466	1500	2554	3073-3113	Ø1370	727	300	663	476	370	11000
C-55132-S150	Ø1429	3636	466	1750	2804	3323-3363	Ø1370	727	300	663	476	397	11000
C-55142-S150	Ø1429	4018	466	2000	3054	3573-3613	Ø1370	727	300	663	476	423	11000
C-63106-S150	Ø1623	4238	596	1500	2684	3291-3331	Ø1570	845	350	790	557	446	13600
C-63116-S150	Ø1623	4731	596	1750	2934	3541-3581	Ø1570	845	350	790	557	783	13600
C-63126-S150	Ø1623	5223	596	2000	3184	3791-3831	Ø1570	845	350	790	557	515	13600

All with base and single packaging

OPERATING PRESSURE : MIN 0 BAR - MAX 10 BAR

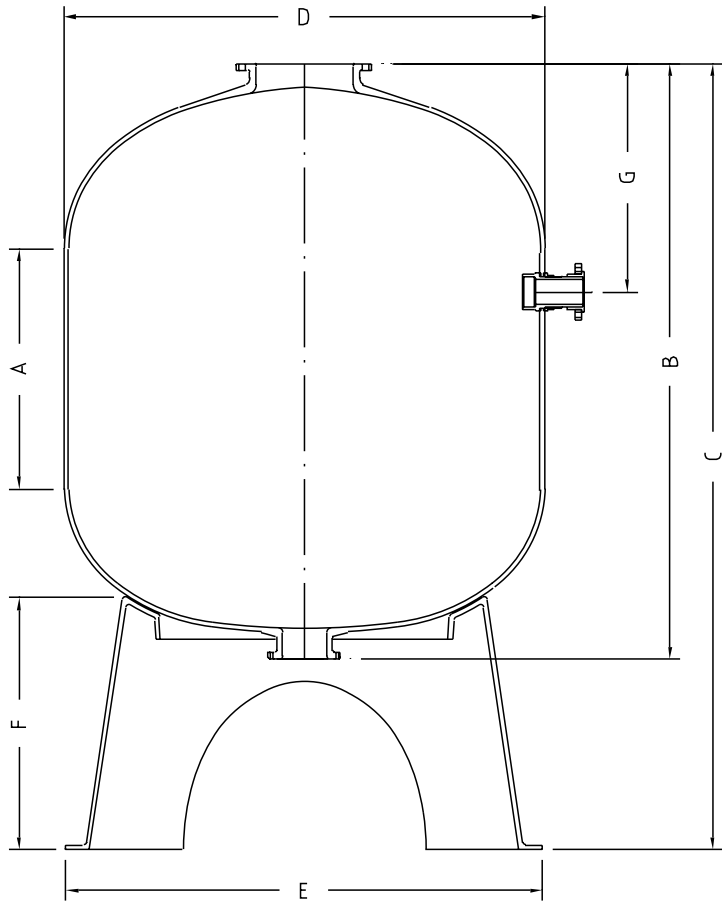
OPERATING TEMPERATURE : MIN 1°C - MAX 65°C

Aeration valve included



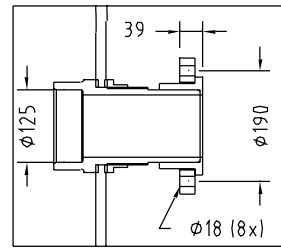
COMPOSITE INDUSTRIAL PRESSURE VESSELS WITH FLANGED OPENINGS

DN 400 Top - 6" Bottom, diameter 125 mm connection.

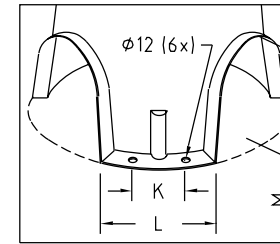


CD-TP-I-288

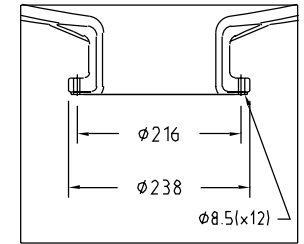
DETAIL SIDE CONNECTION



DETAIL BASE



DETAIL 6" BOTTOM FLANGE



TYPE	D (mm)	(l)	(l)	A (mm)	B (mm)	C (mm)	E (mm)	F (mm)	G (mm)	K (mm)	L (mm)	M (mm)	/(kg)	/(kg)
New C-79098-S150	Ø2000	5438	1120	1000	2479	3271	Ø1969	1060	958	487	984	669	719	22000
New C-79108-S150	Ø2000	6184	1120	1250	2729	3521	Ø1969	1060	958	487	984	669	776	22000
New C-79118-S150	Ø2000	6930	1120	1500	2979	3771	Ø1969	1060	958	487	984	669	832	22000
New C-79128-S150	Ø2000	7675	1120	1750	3229	4021	Ø1969	1060	958	487	984	669	890	22000

All with base and single packaging

OPERATING PRESSURE : MIN 0 BAR - MAX 10 BAR

OPERATING TEMPERATURE : MIN 1°C - MAX 65°C

Aeration valve included