

## COMPOSITE INDUSTRIAL PRESSURE VESSELS WITH THREADED OPENINGS

4" TOP ONLY

4" TOP - 4" BOTTOM STANDARD

4" TOP with M20 DOME OPENING

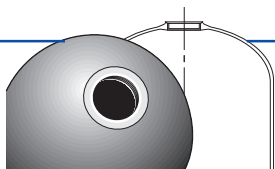
4" TOP - 4" BOTTOM with M20 DOME OPENING

4" TOP - 4" BOTTOM, 2 SIDE OPENINGS DN 50 (63 mm piping)



# STRUCTURAL

TECHNICAL DATA & DRAWINGS



**COMPOSITE INDUSTRIAL PRESSURE VESSELS  
WITH THREADED OPENINGS**

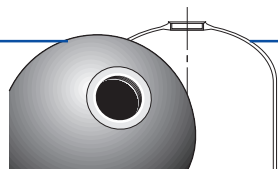
**STRUCTURAL**

**TECHNICAL DATA**



This pressure vessel is intended for use in water treatment installations.  
Not suitable for pneumatic applications.

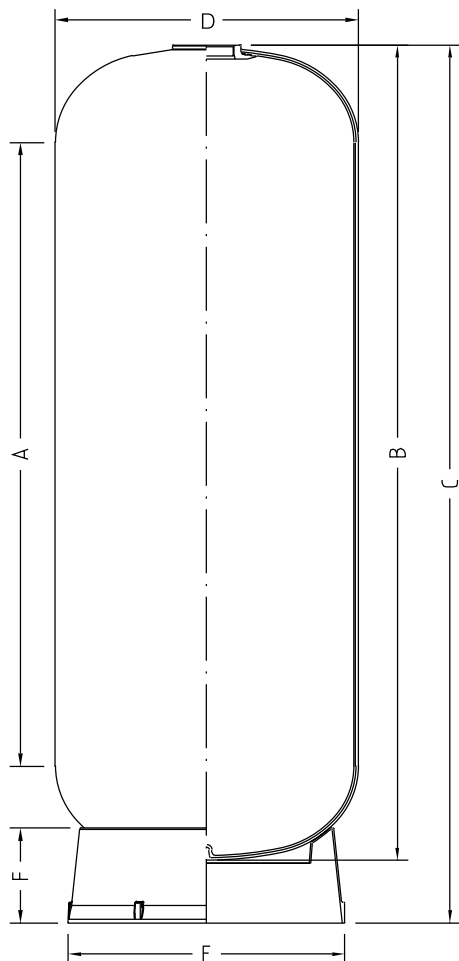
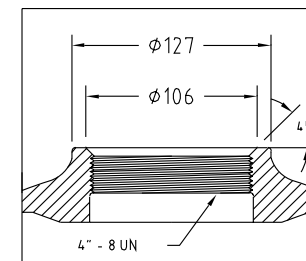
THREADED OPENING :	4" - 8UN
OPERATING PRESSURE :	MIN 0 BAR - MAX 10 BAR
OPERATING TEMPERATURE :	MIN 1°C - MAX 50°C
MINIMUM FATIGUE TESTING :	250.000 CYCLES BETWEEN 0 - 10 BAR
STANDARD COLOUR :	DURALAM BLUE VESSEL, RAL 5015, BLACK BASE
OTHER POSSIBLE COLOURS :	RAL-COLOUR STANDARDS
DISTRIBUTION SYSTEMS :	SEE DISTRIBUTION SYSTEMS CATALOGUE



**COMPOSITE INDUSTRIAL PRESSURE VESSELS  
WITH THREADED OPENINGS**

**4" TOP ONLY**

DETAIL 4" THREAD



CD-TP-I-221B

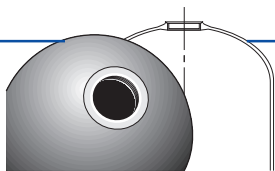
*External diameter*  
*Volume vessel*  
*Volume dome*  
*Cylindrical height*  
*Height vessel*  
*Total height min - max*  
*Outside diameter base*  
*Height base*  
*Maximum base load*  
*Weight empty vessel*

TYPE	D (mm)	(l)	(l)	A (mm)	B (mm)	C (mm)	E (mm)	F (mm)	(kg)	(kg)
C-1443-A3	Ø369	93	7,3	850	1096	1129-1159	Ø330	80	320	14,2
C-1452-A3	Ø369	122	7,3	1076	1322	1335-1365	Ø330	80	320	15,5
C-1465-A3	Ø369	140	7,3	1366	1612	1630-1660	Ø330	80	320	18,5
C-1649-A3	Ø406	128	10,1	955	1240	1260-1278	Ø330	80	410	16,1
C-1665-A3	Ø406	170	10,1	1362	1626	1630-1665	Ø330	80	410	20,0
C-1865-A3	Ø469	250	15,1	1350	1652	1747-1787	Ø510	170	685	32,0
C-2138-A3	Ø552	164	24,0	553	906	1000-1030	Ø510	170	685	20,0
C-2160-A3	Ø552	309	24,0	1151	1499	1600-1630	Ø510	170	685	32,0
C-2469-A3	Ø610	436	35,0	1328	1731	1840-1880	Ø510	170	985	41,0

All with base and single packaging

OPERATING PRESSURE : MIN 0 BAR - MAX 10 BAR

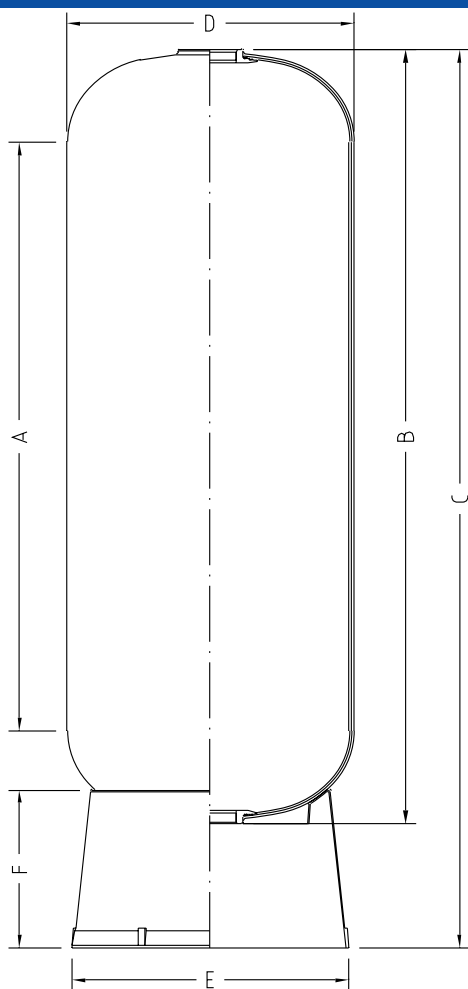
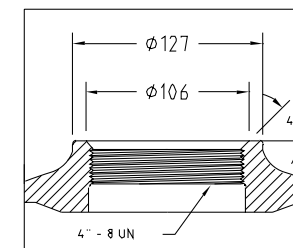
OPERATING TEMPERATURE : MIN 1°C - MAX 50°C



## COMPOSITE INDUSTRIAL PRESSURE VESSELS WITH THREADED OPENINGS

4" TOP - 4" BOTTOM STANDARD

DETAIL 4" THREAD



CD-TP-I-222A

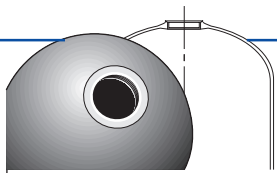
TYPE	D (mm)	(l)	(l)	A (mm)	B (mm)	C (mm)	E (mm)	F (mm)	(kg)	(kg)
C-1443-F7	Ø369	96	7,3	851	1101	1293-1323	Ø374	335	325	15,0
C-1452-F7	Ø369	122	7,3	1046	1310	1502-1532	Ø374	335	325	17,5
C-1465-F7	Ø369	140	7,3	1376	1630	1790-1820	Ø374	335	325	21,6
C-1649-F7	Ø406	125	10,1	961	1236	1374-1414	Ø410	362	420	18,0
C-1665-F7	Ø406	170	10,1	1371	1642	1780-1820	Ø410	362	420	24,0
C-1865-F7	Ø469	245	15,1	1350	1656	1855-1880	Ø539	309	690	33,0
C-2136-F7	Ø552	164	24,0	599	915	1131-1161	Ø539	309	690	23,0
C-2160-F7	Ø552	310	24,0	1155	1514	1730-1760	Ø539	309	690	21,0
C-2469-F7	Ø610	435	35,0	1327	1740	1980-2010	Ø539	309	990	43,0
C-3072-F7	Ø770	712	67,0	1313	1814	2000-2040	Ø768	334	1590	84,0
C-3672-F7	Ø927	1039	116,0	1266	1848	2080-2110	Ø768	334	2240	99,0

All with base and single packaging

OPERATING PRESSURE : MIN 0 BAR - MAX 10 BAR

OPERATING TEMPERATURE : MIN 1°C - MAX 50°C

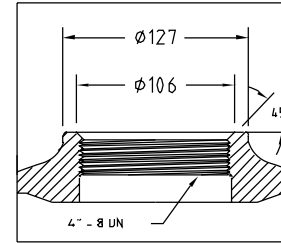
Aeration valve included for 30"-36" vessels



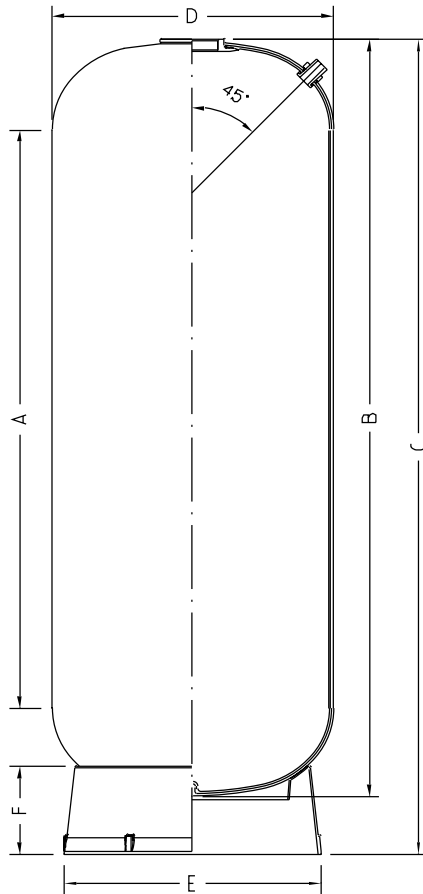
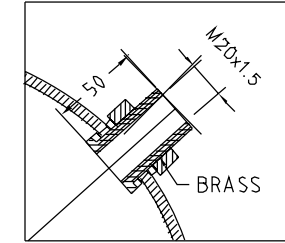
## COMPOSITE INDUSTRIAL PRESSURE VESSELS WITH THREADED OPENINGS

4" TOP ONLY with M20 DOME OPENING

DETAIL 4" THREAD



DETAIL DOME FITTING



CD-TP-I-284A

External diameter  
Volume vessel  
Volume dome  
Cylindrical height  
Height vessel  
Total height min - max  
Outside diameter base  
Height base  
Maximum base load  
Weight empty vessel

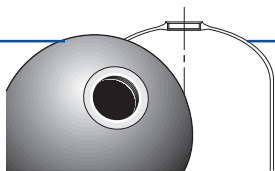
TYPE	D (mm)	(l)	(l)	A (mm)	B (mm)	C (mm)	E (mm)	F (mm)	(kg)	(kg)
C-1443-AD201	Ø369	93	7.3	850	1096	1129-1159	Ø330	80	320	14.2
C-1452-AD201	Ø369	122	7.3	1076	1322	1335-1365	Ø330	80	320	15.5
C-1465-AD201	Ø369	140	7.3	1366	1612	1630-1660	Ø330	80	320	18.5
C-1649-AD201	Ø406	128	10.1	955	1240	1260-1278	Ø330	80	410	16.1
C-1665-AD201	Ø406	170	10.1	1362	1626	1630-1665	Ø330	80	410	20
C-1865-AD201	Ø469	250	15.1	1350	1652	1747-1787	Ø510	170	685	32
C-2136-AD201	Ø552	164	24	553	906	1000-1030	Ø510	170	685	20
C-2138-AD201	Ø552	175	24	594	948	1049-1079	Ø539	309	685	21
C-2160-AD201	Ø552	309	24	1151	1499	1600-1630	Ø510	170	685	32
C-2469-AD201	Ø610	436	35	1328	1731	1840-1880	Ø510	170	985	41

All with base and single packaging

OPERATING PRESSURE : MIN 0 BAR - MAX 10 BAR

OPERATING TEMPERATURE : MIN 1°C - MAX 50°C

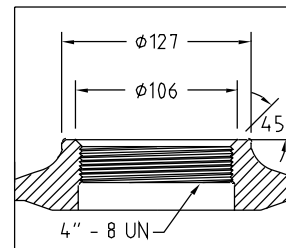
Aeration valve included for 36" vessels



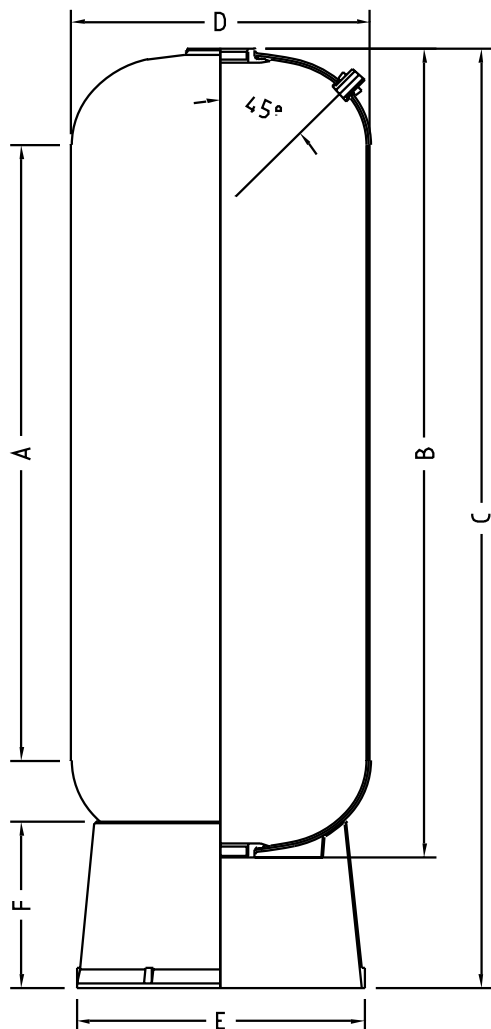
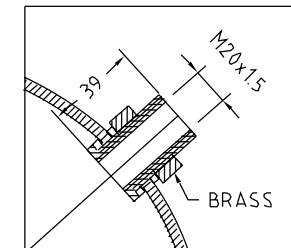
**COMPOSITE INDUSTRIAL PRESSURE VESSELS  
WITH THREADED OPENINGS**

**4" TOP - 4" BOTTOM with M20 DOME OPENING**

DETAIL 4" THREAD



DETAIL DOME FITTING



CD-TP-I-285A

*External diameter*  
*Volume vessel*  
*Volume dome*  
*Cylindrical height*  
*Height vessel*  
*Total height min - max*  
*Outside diameter base*  
*Height base*  
*Maximum base load*  
*Weight empty vessel*

TYPE	D (mm)	(l)	(l)	A (mm)	B (mm)	C (mm)	E (mm)	F (mm)	(kg)	(kg)
C-1443-FD201	Ø369	96	7.3	851	1101	1293-1323	Ø374	335	325	15
C-1452-FD201	Ø369	122	7.3	1046	1310	1502-1532	Ø374	335	325	17.5
C-1465-FD201	Ø369	140	7.3	1376	1630	1790-1820	Ø374	335	325	21.6
C-1649-FD201	Ø406	125	10.1	961	1236	1374-1414	Ø410	362	420	18
C-1665-FD201	Ø406	170	10.1	1371	1642	1780-1820	Ø410	362	420	24
C-1865-FD201	Ø469	245	15.1	1350	1656	1855-1880	Ø539	309	690	33
C-2136-FD201	Ø552	164	24.0	599	915	1131-1161	Ø539	309	690	21
C-2160-FD201	Ø552	310	24.0	1155	1514	1730-1760	Ø539	309	690	35
C-2469-FD201	Ø610	435	35.0	1327	1740	1980-2010	Ø539	309	990	43
C-3072-FD201	Ø770	712	67.0	1313	1814	2000-2040	Ø768	334	1590	84
C-3672-FD201	Ø927	1039	116.0	1266	1848	2080-2110	Ø768	334	2240	99

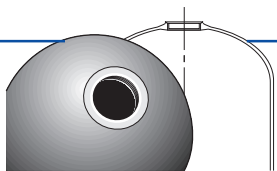
All with base and single packaging

OPERATING PRESSURE : MIN 0 BAR - MAX 10 BAR

OPERATING TEMPERATURE : MIN 1°C - MAX 50°C

Aeration valve included for 30"-36" vessels

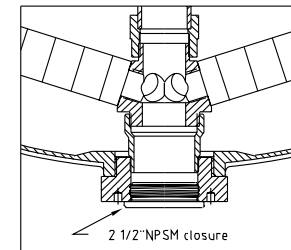
CD\_CIT6\_0900



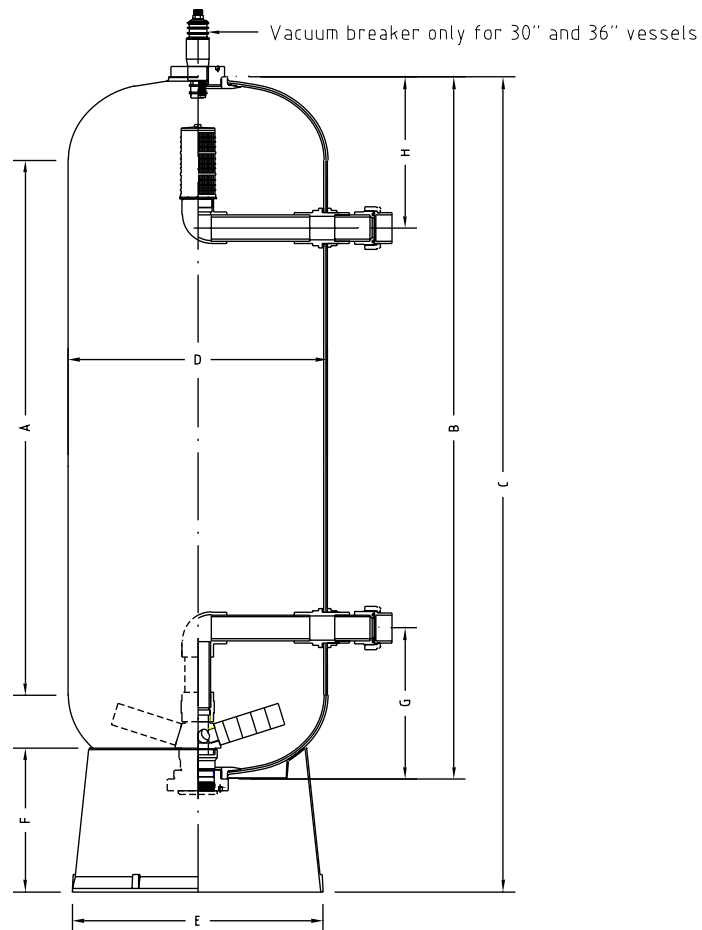
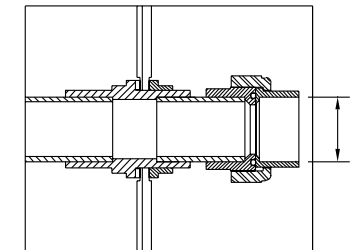
## COMPOSITE INDUSTRIAL PRESSURE VESSELS WITH THREADED OPENINGS

4" TOP 4" BOTTOM, 2 SIDE CONNECTIONS DN 50 (63 mm piping)

DETAIL 4" THREAD



DETAIL SIDE HOLE



CD-TP-I-272B

External diameter  
Volume vessel  
Volume dome  
Cylindrical height  
Height vessel  
Total height min - max  
Outside diameter base  
Height base  
Maximum base load  
Distance lower sidehole  
Distance upper sidehole  
Weight empty vessel

TYPE	D (mm)	(l)	(l)	A (mm)	B (mm)	C (mm)	E (mm)	F (mm)	(kg)	G (mm)	H (mm)	(kg)
C-2160-S611	Ø552	310	24	1155	1514	1730-1760	Ø539	309	690	317	314	35
C-2469-S611	Ø610	435	35	1327	1740	1980-2010	Ø539	309	990	349	350	43
C-3072-S611	Ø770	712	67	1313	1814	2000-2040	Ø768	334	1590	390	391	84
C-3672-S611	Ø927	1039	116	1266	1848	2080-2110	Ø768	334	2240	484	485	99

Aeration valve included for 30"-36" vessels

All with base and single packaging

OPERATING PRESSURE : MIN 0 BAR - MAX 10 BAR

OPERATING TEMPERATURE : MIN 1°C - MAX 50°C